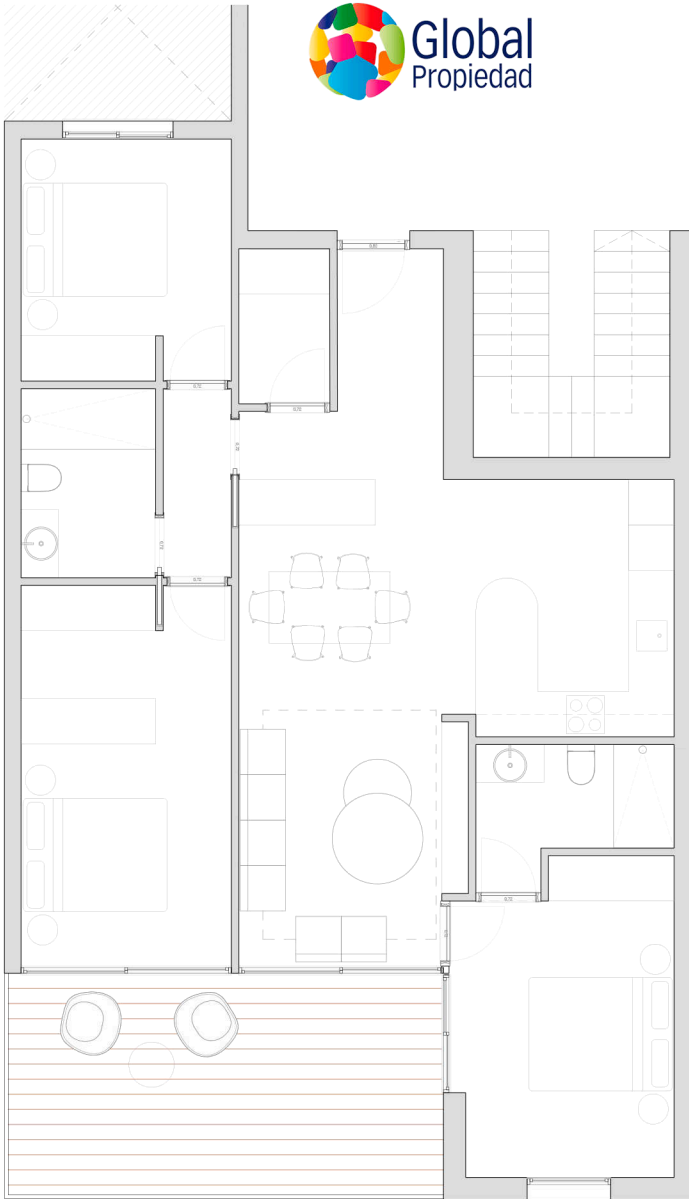
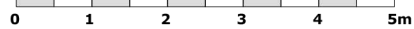




TIPOLOGÍA	TIPO B_3 Hab
S.UTIL INTERIOR	82,50m ²
S. UTIL PATIO	-----
S. UTIL TERRAZA	17,30m ²
S. UTIL TOTAL	99,80m²
S. CONSTRUIDA TOTAL	110,30m²



Escala grafica 1/100m



turia
EDIFICIO

